

POLES TOGETHER

<http://ccnmtl.columbia.edu/projects/poles/>

Setting Up Your Computer to Run the MapViewers

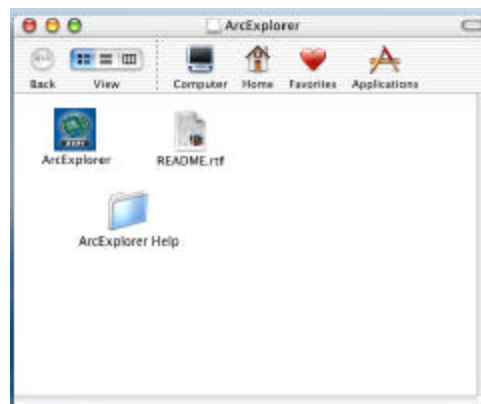
For students using Apple Macintosh computers with OS X, accessing the Poles Together map viewers requires downloading and installing an application called ArcExplorer. Follow these instructions to set it up.

PLEASE NOTE: At the present time, Mac OS 9 users cannot view the map viewers.

1. Go to the Poles Together website and click any of the links to Mapviewers.
2. Download the ArcExplorer 4 application under the Mac Users section. Save the link to your desktop or wherever you prefer to store downloaded files.
3. Doubleclick on the installer. It should be called ArcExplorer.dmg.sit. It will create a file called Arc Explorer.dmg. Doubleclick on that file to mount the ArcExplorer disk image.

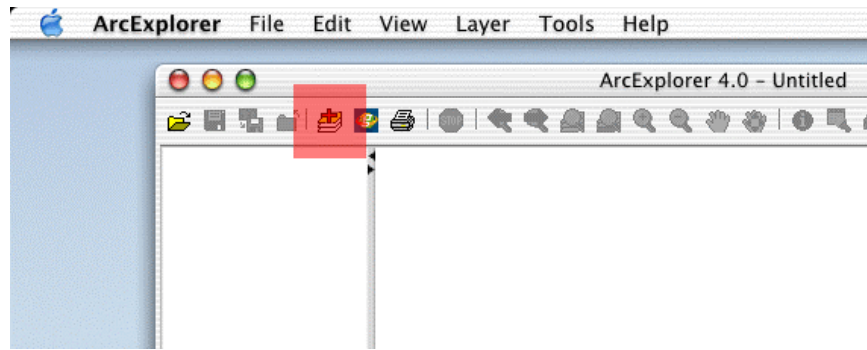


4. Step 3 will create a disk image on your desktop called ArcExplorer. Open that folder and drag the 3 files in that folder to the Applications folder on your hard drive.

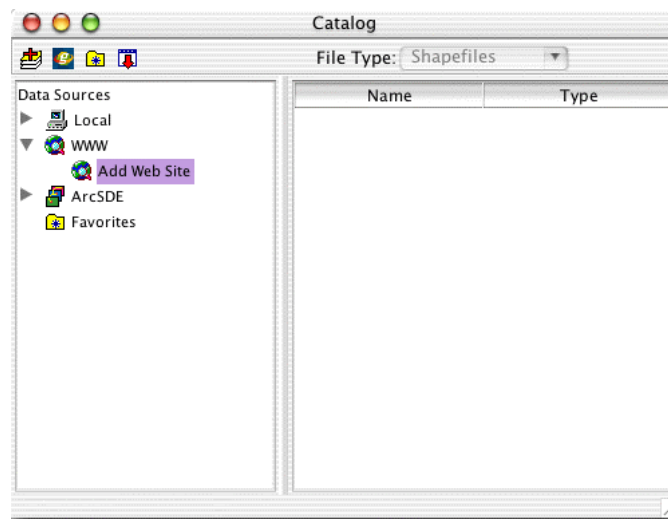


5. Start the ArcExplorer application by doubleclicking it.

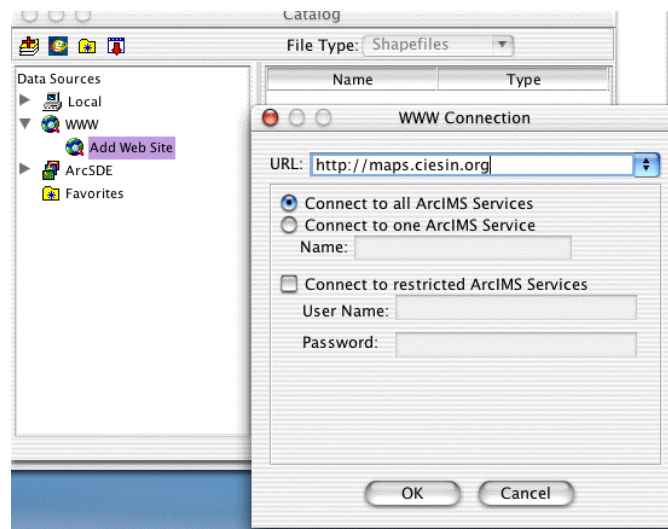
For MAC OS X COMPUTERS ONLY



6. Go to the Layer Menu and select Add Layers (or click the Add Layers icon on the toolbar, highlighted in red).

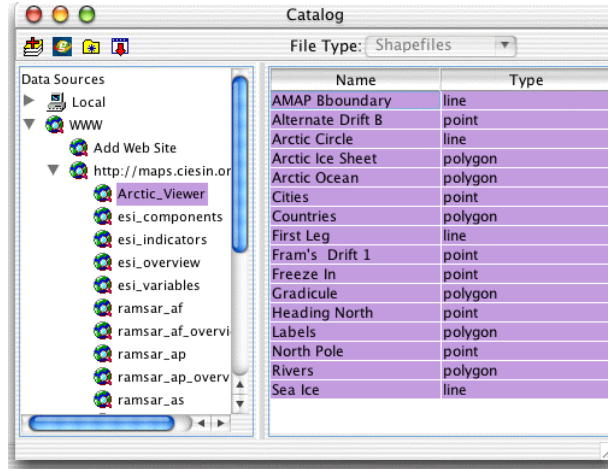


7. An Add Layers dialog box will pop-up. Open the www selection from the list of options on the left side of the dialog box. Doubleclick on the Add Web Site selection that appears below the www selection.

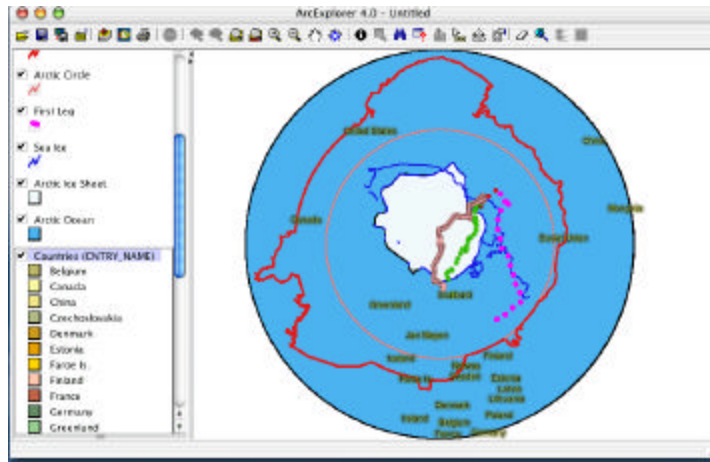


8. Another box will pop-up. In the http:// field at the top, type in <http://maps.ciesin.org>.

For MAC OS X COMPUTERS ONLY



9. A list of files will appear on the left. Select either the Arctic Viewer or the Antarctic Viewer. Layers will appear on the right. Using the shift key, select all the layers at once. Then Click the Add Layers icon in the top left corner of the dialog box. Close the dialog box.



10. The layers should then load into the main Arc Explorer window. However, one problem you will encounter is the Arctic Ocean layer will be covering the Countries Layers. Correct this by dragging the Countries Layer above the Arctic Ocean layer to get the proper view:

