

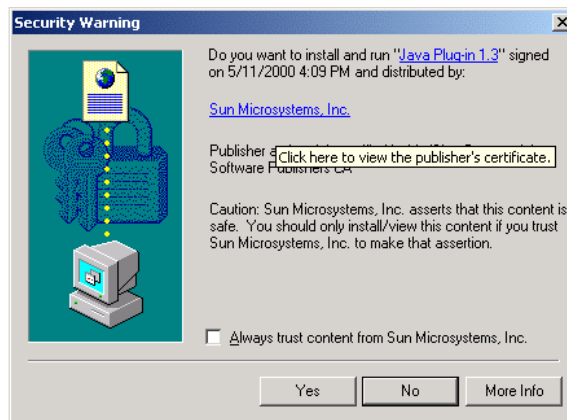
POLES TOGETHER

<http://ccnmtl.columbia.edu/projects/poles/>

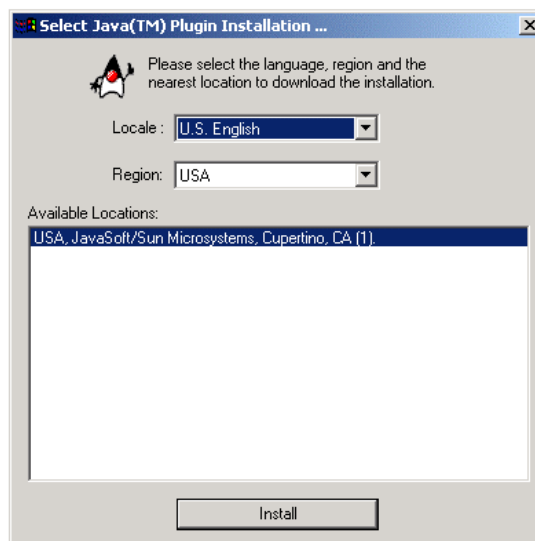
Setting Up Your Computer to Run the MapViewers

For students with Windows computers, the Poles Together Map Viewers require extra applications built in the Java programming language that work with your browser. Follow the instructions below to set up your browser with these applications.

1. Launch Internet Explorer or Netscape, navigate to the Poles Together website, and click the link to the map viewer you wish to load.
2. If your computer does not have Java Runtime Environment (JRE) you will be directed to install that application first. A Security Warning Box will pop-up. **Click Yes.**



3. Another box will pop-up asking you to install Java Plug-In. **Click Install.**



For WINDOWS COMPUTERS ONLY

- Once the Java install is complete, you will receive a pop-up boxing security warning. **Click Grant** to proceed.



- On the page you will be directed to download and run an Installer that will allow you to open the map viewer. **Click the Download Installer for Windows** button.



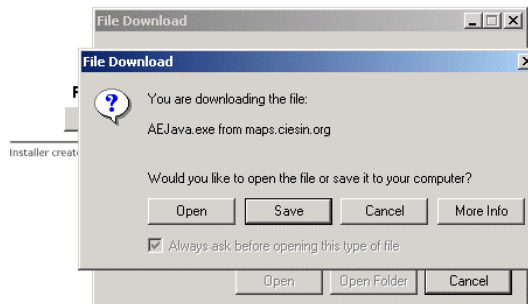
ESRI ArcIMS Viewer

Recommended Installation for Your Platform:

Download Installer for Windows 95,98,NT...

Installer created with [InstallAnywhere](#)® by Zero G Software, Inc. Copyright 2000. www.ZeroG.com

- A box will pop-up asking if you want to Open or Save a file called AEJava.exe. **Click Open**.



For WINDOWS COMPUTERS ONLY

7. A few files will get installed, then it will ask you to choose a language. The default is English, so all you need to do is **click OK**.



8. Then some instructions for installing the ESRI ArcIMS Viewer will be displayed. **Click NEXT**.



9. Follow the instructions provided to install the rest of the files required for the viewer. Once the installation is complete. **Close your browser and re-open it.**
10. Return to the page with the link to the map viewer you wish to load and click the link. The map viewer should load. If it does not, then you should repeat the installation procedure above.

Tips

The Viewers work best with newer browsers, so if you have Netscape 4.7x or Internet Explorer 4.x (or earlier versions) consider upgrading to a newer version at:

- <http://channels.netscape.com/ns/browsers/download.jsp> (Netscape)
- <http://www.microsoft.com/windows/ie/downloads/ie6/> (Internet Explorer)

The map viewer is a large program and will not function well on slow internet connections.